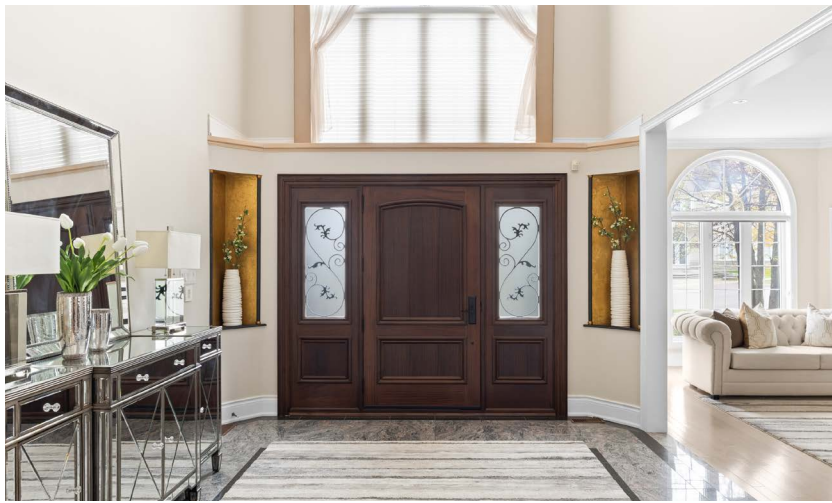




60 Bowan Court



FOYER

- Door with decorative glass insert and side lights
- Double door front hall closet
- Vaulted ceiling with oversized windows
- Granite flooring

LIVING ROOM

- Wall to wall bay window
- Decorative crown moulding
- Gas fireplace with wooden mantle and marble hearth
- Pot lights
- Solid oak flooring

DINING ROOM

- Large three panel window
- Decorative crown moulding
- Built-in wood and glass display cabinets with lighting
- Solid oak flooring





KITCHEN

- Above sink window
- Decorative crown moulding
- Walkout into backyard
- Large eat in kitchen with sky lights above
- Extended kitchen cabinetry with granite countertops and breakfast bar
- Centre island with stainless steel bar sink and under counter storage
- Built-in desk
- Stainless steel double undermount sink
- Single lever faucet with vegetable sprayer
- KitchenAid stainless steel french door refrigerator and freezer
- Thermador stainless steel gas cooktop
- KitchenAid stainless steel stacked wall oven and microwave
- Panelled exhaust fan
- LG stainless steel dishwasher
- Semi flush mount lights
- Pot lights
- Tile flooring



FAMILY ROOM

- Large window facing the backyard
- Decorative crown moulding
- Three sided gas fireplace
- Pot lights
- Solid oak flooring

OFFICE

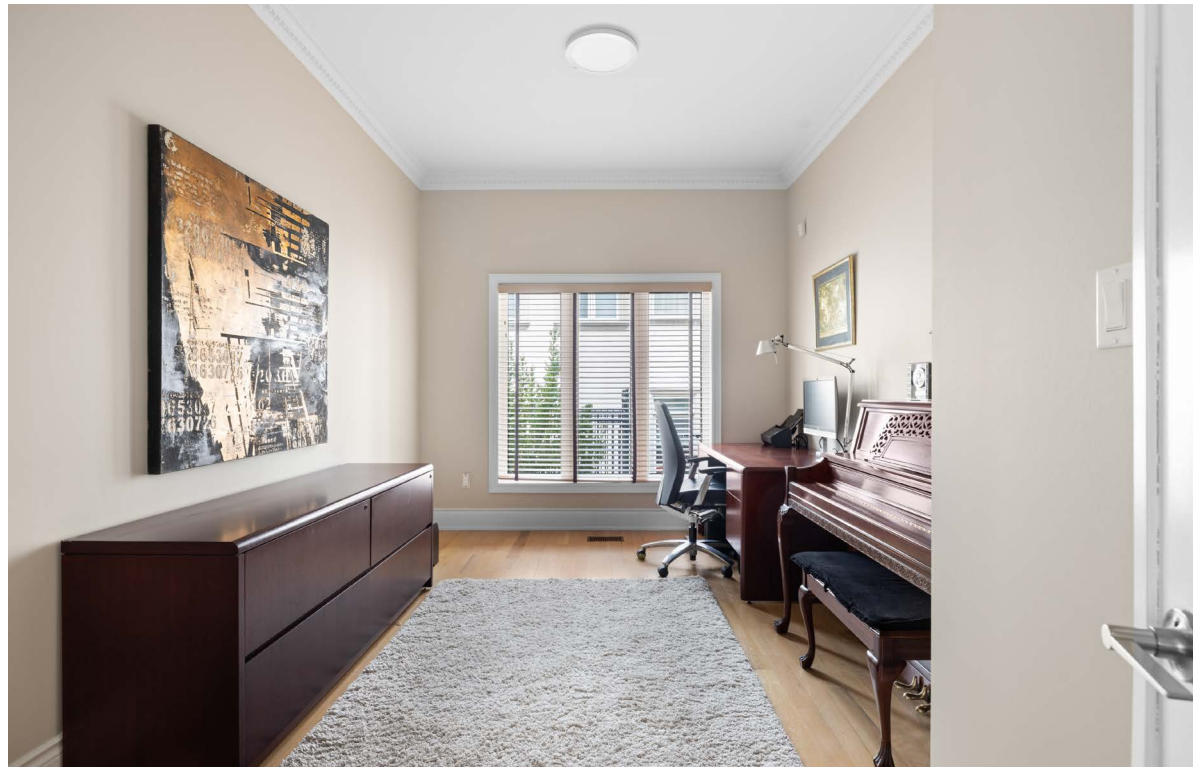
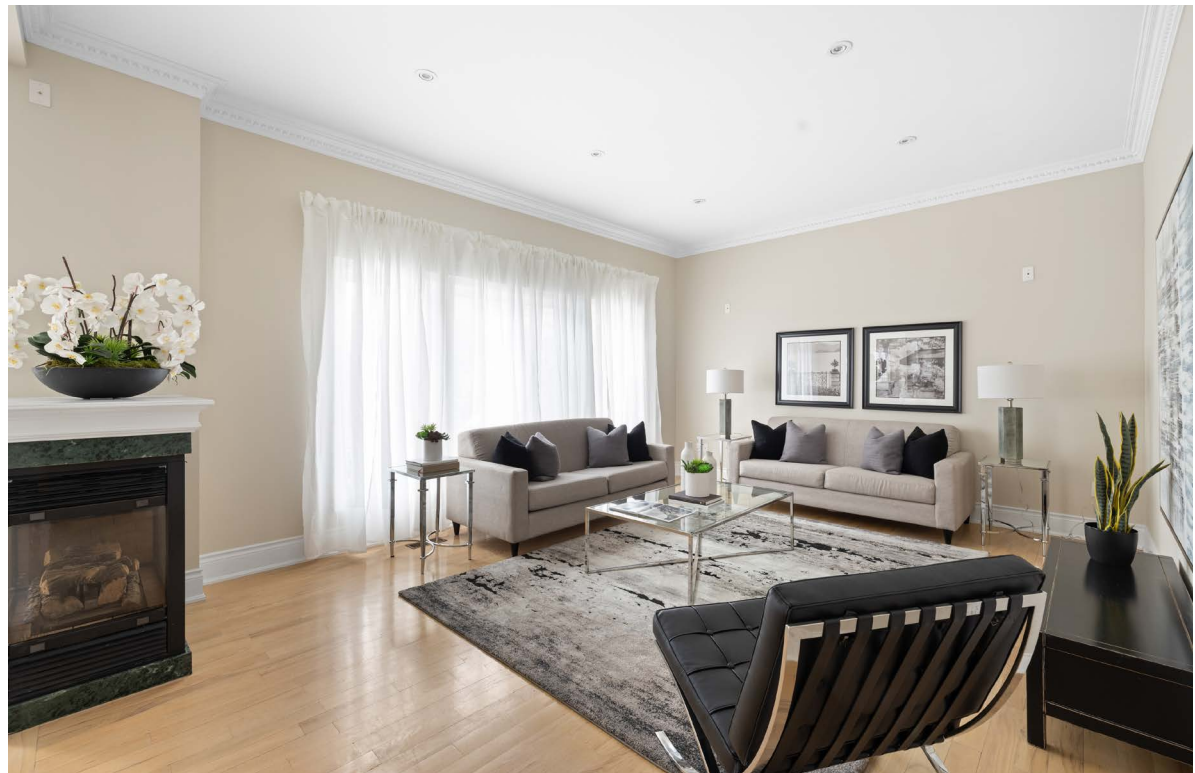
- Large window
- Decorative crown moulding
- Flushmount LED light
- Solid oak flooring

POWDER ROOM

- Decorative crown moulding
- Vanity with quartz countertop and under counter storage
- Chrome and brass faucet
- Framed mirror
- Vanity light
- Granite flooring

MUDROOM / LAUNDRY

- Side door entrance
- Entrance into garage
- Top load clothes washer and dryer
- Stainless steel laundry sink
- Built-in cabinetry and pantry
- Flushmount LED light
- Tile flooring





LANDING

- Large skylight
- Decorative crown moulding
- Solid oak staircase
- Linen closet
- Solid oak flooring

PRIMARY BEDROOM

- Large windows
- Decorative crown moulding and ceiling detail
- Walk-in closet with built in closet organisers
- Semi flush mount light fixtures
- Solid oak flooring

PRIMARY ENSUITE WASHROOM

- Large double vanity with under counter storage and chrome dual lever faucet with framed mirrors
- Deep soaker bathtub
- Shower with glass enclosure
- Above mirror vanity light
- Tile flooring



2ND BEDROOM

- Wall to wall bay window
- Walk-in closet with built in closet organisers
- Flush mount LED light fixture
- Solid oak flooring

2ND BEDROOM ENSUITE WASHROOM

- Vanity with under counter storage
- Chrome single lever faucet
- Bathtub with showerhead
- Framed mirror
- Vanity light
- Tile flooring

3RD BEDROOM

- Walk-in closet with built in closet organisers
- Flush mount LED light fixture
- Solid oak flooring

3RD BEDROOM ENSUITE WASHROOM

- Vanity with under counter storage
- Chrome single lever faucet
- Bathtub with showerhead
- Framed mirror
- Vanity light
- Tile flooring





4TH BEDROOM

- Walk-in closet with built in closet organisers
- Flush mount LED light fixture
- Solid oak flooring

4TH BEDROOM ENSUITE WASHROOM

- Extended vanity with under counter storage
- Chrome single lever faucet
- Bathtub with showerhead
- Framed mirror
- Vanity light
- Tile flooring



5TH BEDROOM

- Walk-in closet with built in closet organisers
- Flush mount LED light fixture
- Solid oak flooring

5TH BEDROOM ENSUITE WASHROOM

- Vanity with under counter storage
- Chrome single lever faucet
- Bathtub with showerhead
- Framed mirror
- Vanity light
- Tile flooring

RECREATION ROOM

- Two storage rooms
- Furnace room
- Pot lights
- Tile flooring

KITCHEN

- Extended kitchen cabinetry
- Wall to wall pantry storage
- Stainless steel sink with single lever faucet
- Single lever faucet with vegetable sprayer
- Stainless steel gas range
- Kenmore panelled french door refrigerator and freezer
- Stainless steel hood fan
- Tile flooring

6TH BEDROOM

- Flushmount light
- Tile flooring

WASHROOM

- Private toilet room
- Vanity with under counter storage
- Bevelled above sink mirror
- Glass enclosed shower
- Sauna
- Tile flooring

EXTRAS

- Large professionally landscaped private backyard
- Inground heated pool with new liner (2025)
- Walkout from the basement

PARKING

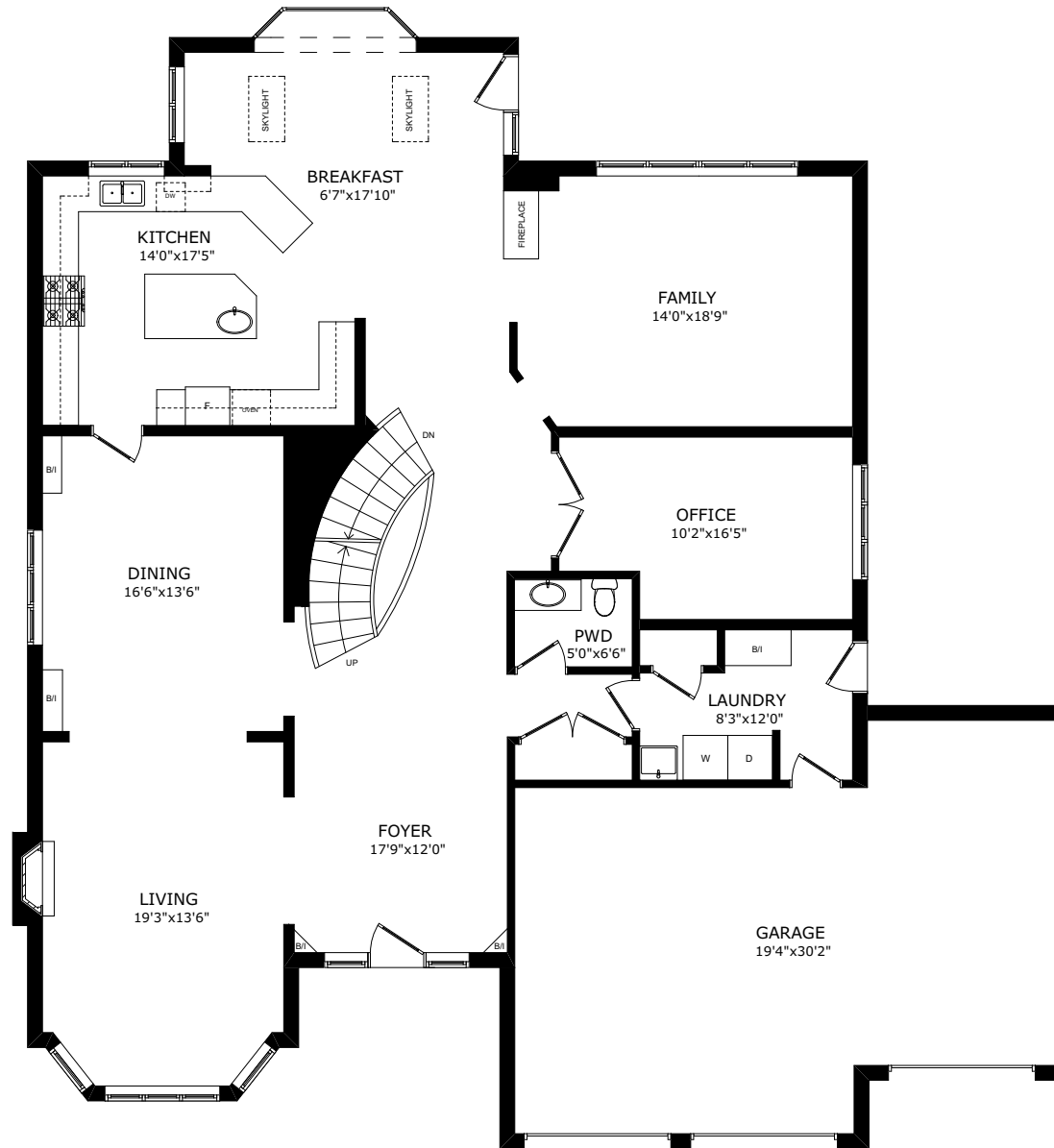
- Three car garage with triple car driveway

LOT SIZE

- 70.54ft X 131.23ft



60 BOWAN COURT



MAIN FLOOR

SIZE AND LAYOUT ARE APPROXIMATE,
BUYER TO VERIFY SIZES. WWW.HOUSSMAX.CA

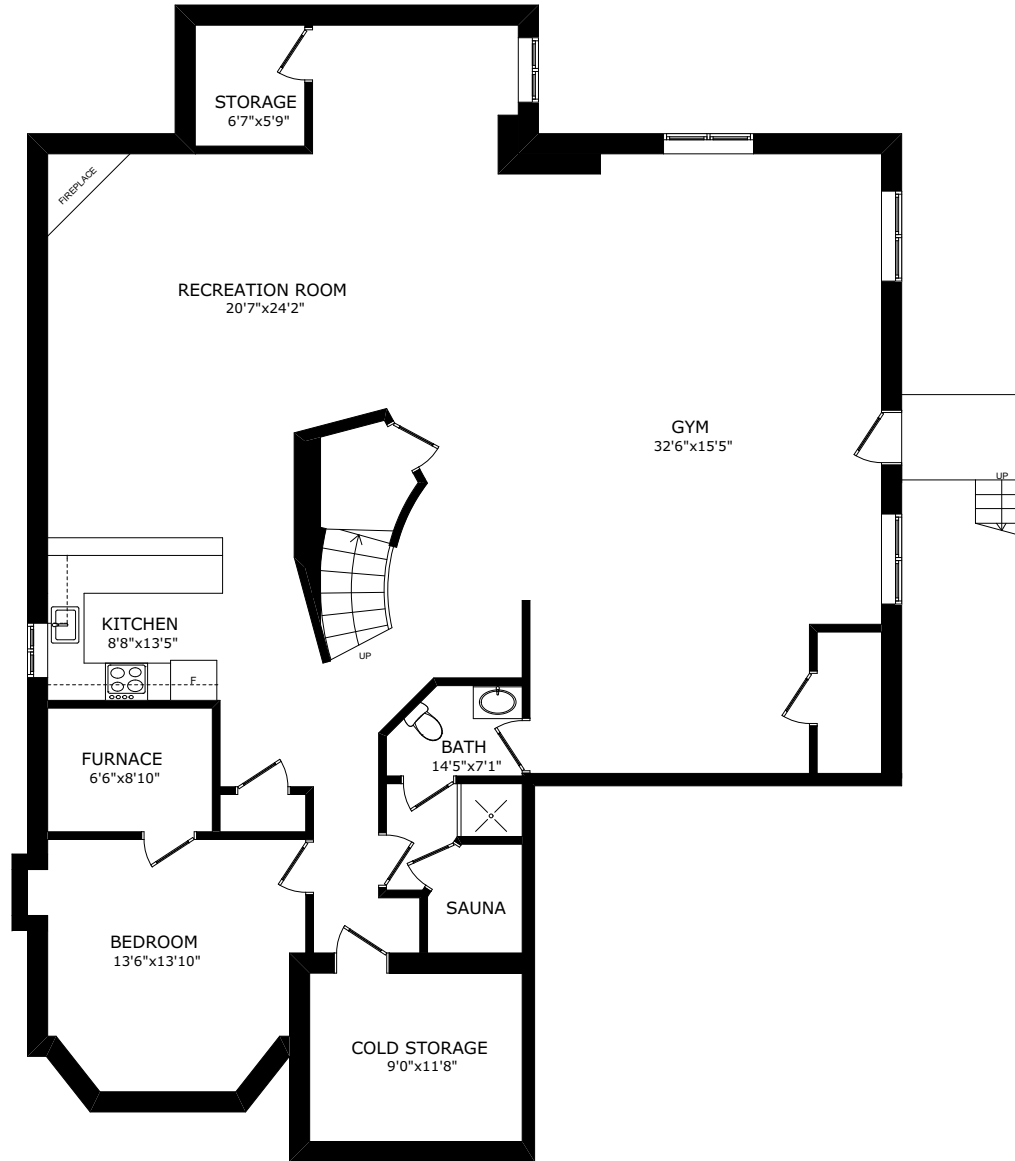
60 BOWAN COURT



SECOND FLOOR

SIZE AND LAYOUT ARE APPROXIMATE,
BUYER TO VERIFY SIZES. WWW.HOUSSMAX.CA

60 BOWAN COURT



BASEMENT

SIZE AND LAYOUT ARE APPROXIMATE,
BUYER TO VERIFY SIZES. WWW.HOUSSMAX.CA



KEN RAMSAY

SALES REPRESENTATIVE

DIRECT: 416.906.8366

FAX: 416.441.9926

INFO@KENRAMSAY.COM

RAMSAYREALESTATE.CA



JAIME RAMSAY

SALES REPRESENTATIVE

DIRECT: 416.918.6935

FAX: 416.441.9926

JAIME@KENRAMSAY.COM

RAMSAYREALESTATE.CA



2145 AVENUE ROAD, TORONTO, ON M5M4B2 | 416.441.2888

