



951 White Clover Way

GROUND LEVEL

FOYER

- Single door with glass insert and side lights
- Front vestibule
- Front hall closet with shelf and hanging
- Pot lights
- Tile flooring

LIVING ROOM

- Large bay window
- French doors
- Pot lights
- Hardwood flooring

DINING ROOM

- Chandelier
- Large window
- Hardwood flooring

OFFICE

- Pot lights
- Hardwood flooring





FAMILY ROOM

- Built-in stone feature wall with integrated lighting
- Electric fireplace
- Pot lights
- Hardwood flooring

KITCHEN

- Glass sliding door to backyard
- Above sink window looking into the backyard
- Large eat-in kitchen area
- Breakfast bar
- Extended kitchen cabinetry with contemporary hardware
- Granite countertops
- Stainless steel double undermount sink with single lever faucet
- Samsung stainless steel french door refrigerator with bottom drawer freezer
- Samsung stainless steel glass cooktop range
- Stainless steel exhaust fan
- LG Stainless steel dishwasher
- Over breakfast bar pendant lighting
- Pot lights
- Tile flooring

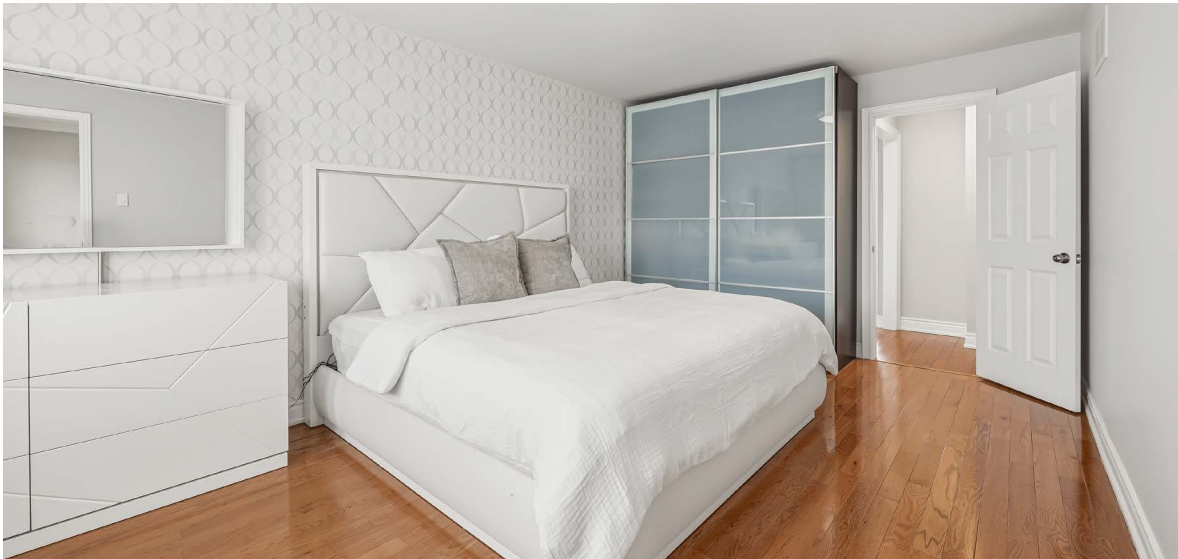


POWDER ROOM

- Vanity with under counter storage
- Stone countertop with undermount sink and single lever faucet
- Frameless bevelled mirror
- Pot lights
- Tile flooring

LAUNDRY

- Garage entrance
- Built-in cabinetry
- Laundry sink
- Samsung front load washer and dryer
- Tile flooring



SECOND LEVEL

PRIMARY BEDROOM

- Feature wall
- Walk-in closet
- LED flushmount light fixture
- Hardwood flooring

PRIMARY ENSUITE

- Double custom built vanities with under counter storage
- Quartz countertop with undermount sinks and single lever faucets
- Integrated mirror vanity lights
- Glass enclosed shower
- Freestanding bathtub with tub filler
- Pot lights
- Tile flooring



2ND & 4TH BEDROOMS

- Closet with shelf and hanging
- LED flushmount light fixture
- Hardwood flooring

3RD BEDROOM

- Den or office alcove area
- Closet with shelf and hanging
- LED flushmount light fixture
- Hardwood flooring



WASHROOM

- Framed vanity mirror
- Custom built vanities with under counter storage
- Stone countertop with undermount sink and dual lever faucet
- Glass enclosed shower
- Vanity light
- Pot light
- Tile flooring

LOWER LEVEL

RECREATION ROOM

- Kitchen cabinetry with contemporary hardware and quartz countertop
- Undermount sink and single lever faucet
- Pot lights
- Wide plank flooring

THEATRE

- Platform for theater seats
- Wall sconces
- Ceiling detail and cove lighting
- Pot lights
- New broadloom carpet

BEDROOM

- Pot lights
- Built-in closet
- Wide plank flooring

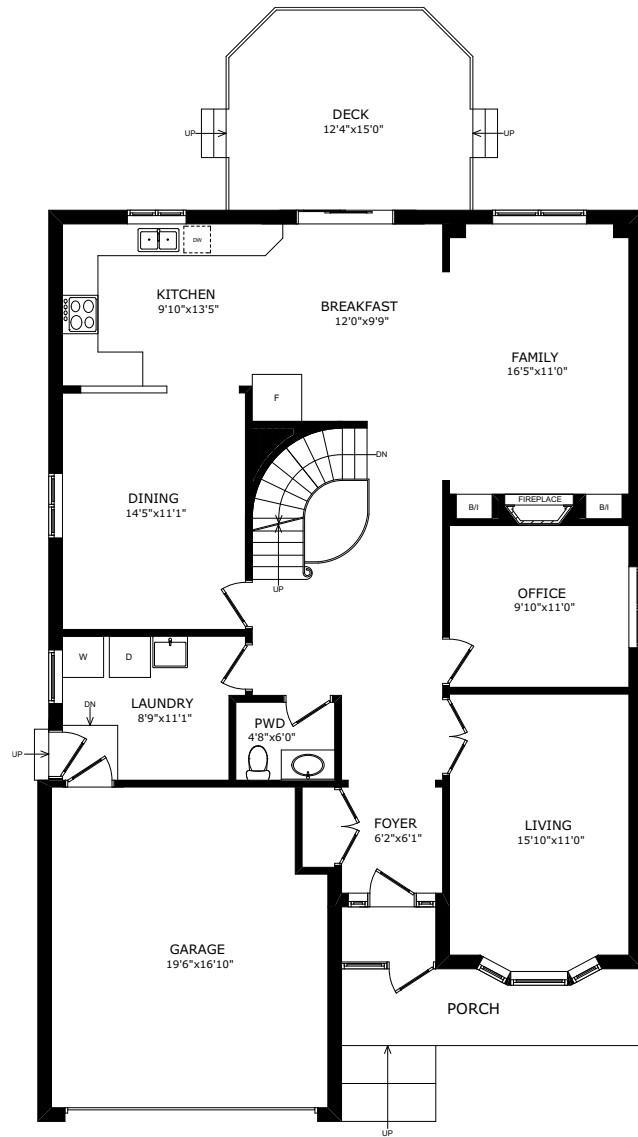
HOBBY ROOM

- Feature wall with integrated lighting
- Pot lights
- New broadloom carpet

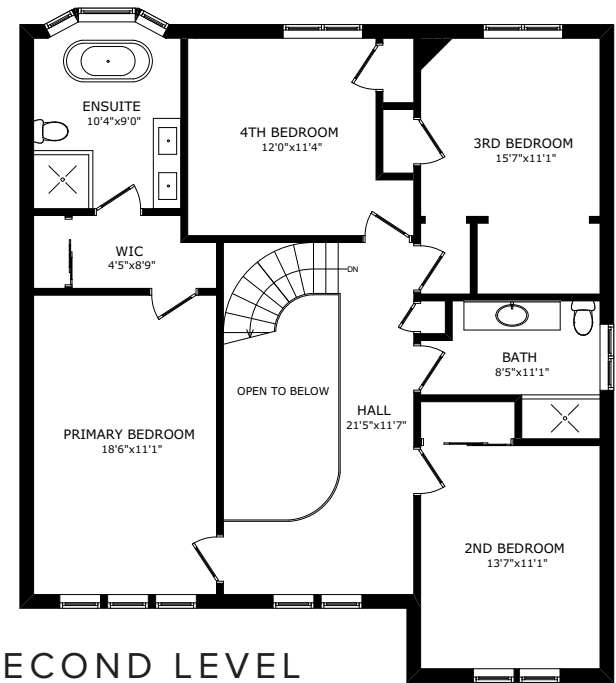
WASHROOM

- Vanity with quartz countertop and under counter storage
- Undermount sink with single lever faucet
- Deep soaker bathtub with shower head
- Vanity light
- Pot lights
- Tile flooring

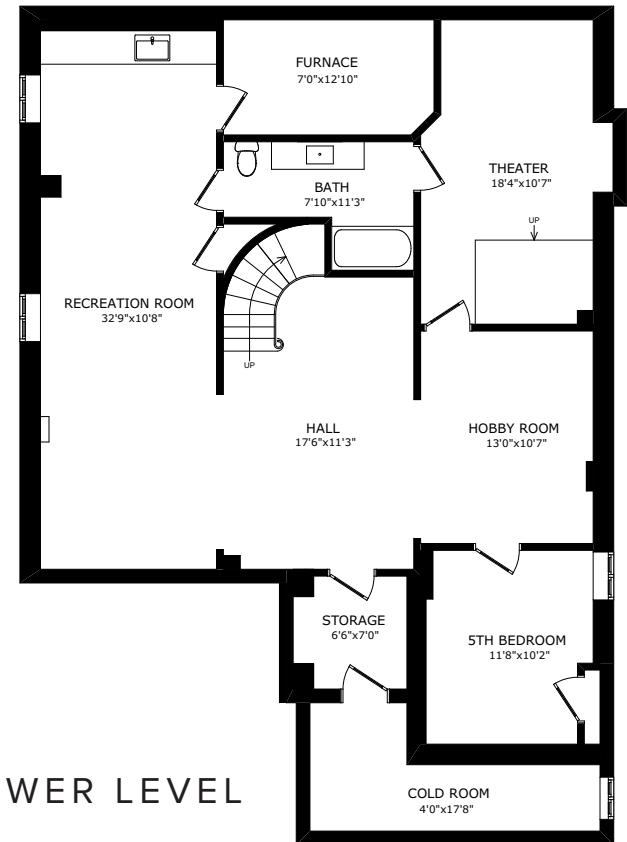




GROUND LEVEL



SECOND LEVEL



LOWER LEVEL

ADDITIONAL INFORMATION

EXTRAS

- New shingles 2022
- New hard wood staircase with metal pickets 2022
- New interlock driveway and walkway
- New concrete pad in backyard
- New basement theatre
- Second kitchen in the basement
- Covered porch in the backyard

PARKING

- Two car garage with double private driveway

HEATING & AIR CONDITIONING

- Forced air
- Central air conditioning

POSESSION

- To be arranged





KEN RAMSAY

SALES REPRESENTATIVE

DIRECT: 416.906.8366
FAX: 416.441.9926
INFO@KENRAMSAY.COM
RAMSAYREALESTATE.CA



JAIME RAMSAY

SALES REPRESENTATIVE

DIRECT: 416.918.6935
FAX: 416.441.9926
JAIME@KENRAMSAY.COM
RAMSAYREALESTATE.CA



2145 AVENUE ROAD, TORONTO, ON M5M4B2 | 416.441.2888

