



139 Hammersmith Avenue

GROUND LEVEL

FOYER

- Wood door with glass insert
- Front hall closet
- Flushmount light fixture
- Engineered hardwood flooring

LIVING ROOM

- Large bay window
- Woodburning fireplace
- Semi-flushmount light fixture
- Engineered hardwood flooring

DINING ROOM

- Large bay windows
- Built-in antique wood hutch
- Chandelier
- Engineered hardwood flooring





KITCHEN

- Single door entry to the backyard
- Above sink window
- Large eat-in kitchen area
- Extended kitchen cabinetry with contemporary hardware
- Butcherblock countertops
- Apron sink with single lever faucet
- LG french door refrigerator with bottom drawer freezer
- GE Cafe induction range with double oven
- Stainless steel range hood
- Bosch panelled dishwasher
- Semi-flushmount light fixture
- Engineered hardwood flooring



4TH BEDROOM

- Large bay window
- Flushmount light fixture
- Engineered hardwood flooring

WASHROOM

- Vanity with under counter storage
- Framed mirror
- Shower with glass enclosure
- Semi-flushmount light fixture
- Mosaic tile flooring



SECOND LEVEL

PRIMARY BEDROOM

- Skylight
- Wall to wall storage closet
- Built-in closets with drawers and hanging
- LED flushmount light fixture
- Engineered hardwood flooring



PRIMARY ENSUITE

- Built-in floating vanity with under counter storage
- Frameless mirror
- Frameless glass enclosed shower
- Deep soaker tub
- Vanity light fixture
- Stone flooring



2ND BEDROOM

- Skylight
- Wall to wall storage closet
- Flushmount light fixture
- Engineered hardwood flooring

3RD BEDROOM

- Semi-flushmount light fixture
- Engineered hardwood flooring

WASHROOM

- Framed vanity mirror
- Pedestal sink
- Bathtub with shower head
- Vanity light fixture
- Stone flooring

LAUNDRY ROOM

- LG stacked washing machine and dryer
- Engineered hardwood flooring





LOWER LEVEL

FAMILY ROOM

- Pot lights
- Carpet flooring

5TH BEDROOM

- Pot lights
- Closet
- Carpet flooring

6TH BEDROOM

- Pot lights
- Extended storage closet
- Carpet flooring

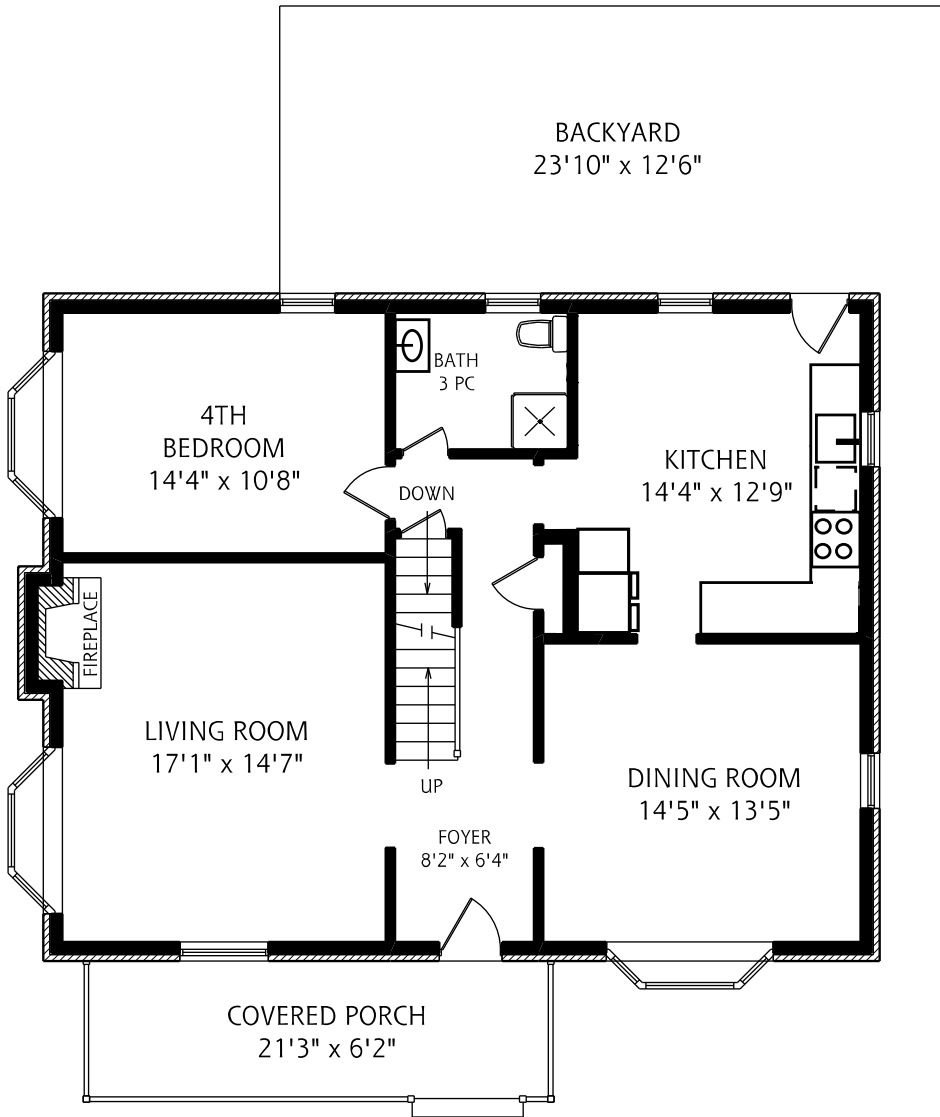
WASHROOM

- Framed mirrored medicine cabinet
- Pedestal sink
- Shower with glass enclosure
- Vanity light fixture
- Tile flooring

UTILITY ROOM

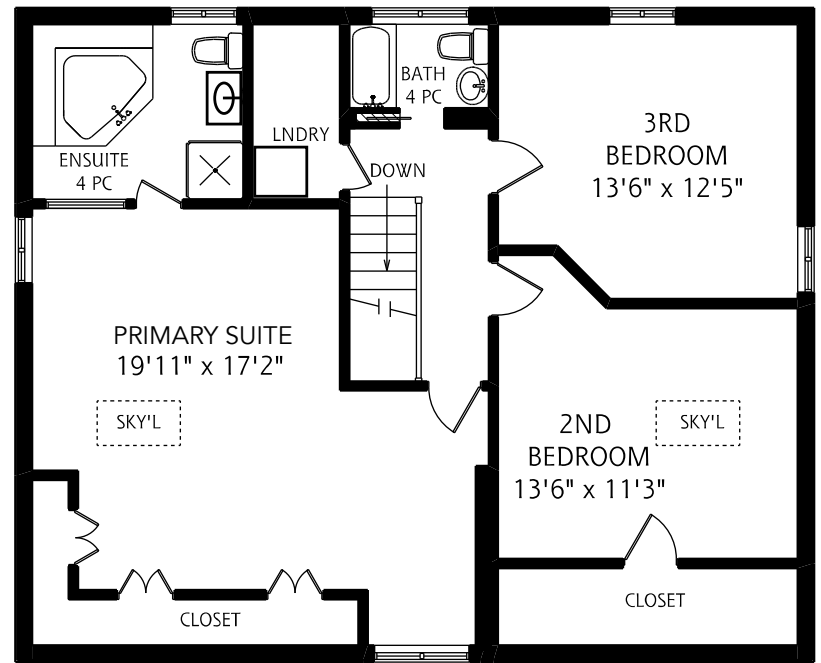
- Laundry rough in
- Pot lights
- Concrete flooring



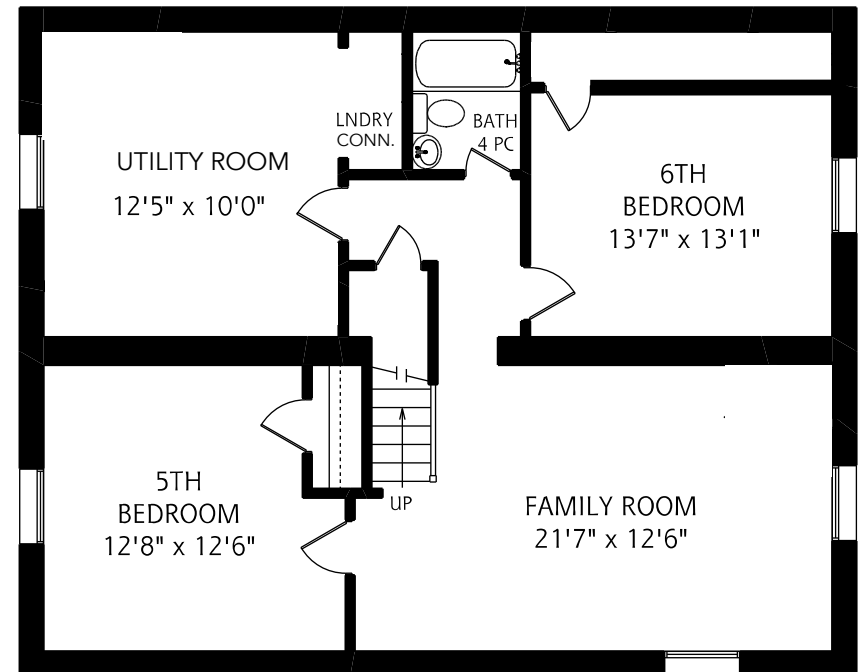


MAIN FLOOR
1,150 SQUARE FEET

ALL MEASUREMENTS SHOULD BE CONSIDERED APPROXIMATE



SECOND FLOOR
1,150 SQUARE FEET



LOWER LEVEL
1,150 SQUARE FEET

ADDITIONAL INFORMATION

EXTRAS

- New engineered hardwood flooring 2026
- Refinished stairs 2026
- Updated kitchen 2026
- Freshly painted 2026
- Updated primary washroom 2026
- New roof 2025
- Heat pump 2022
- Window wells added and full basement waterproofing with sump pump 2022
- High-efficiency combi-boiler 2021
- Lawn irrigation

PARKING

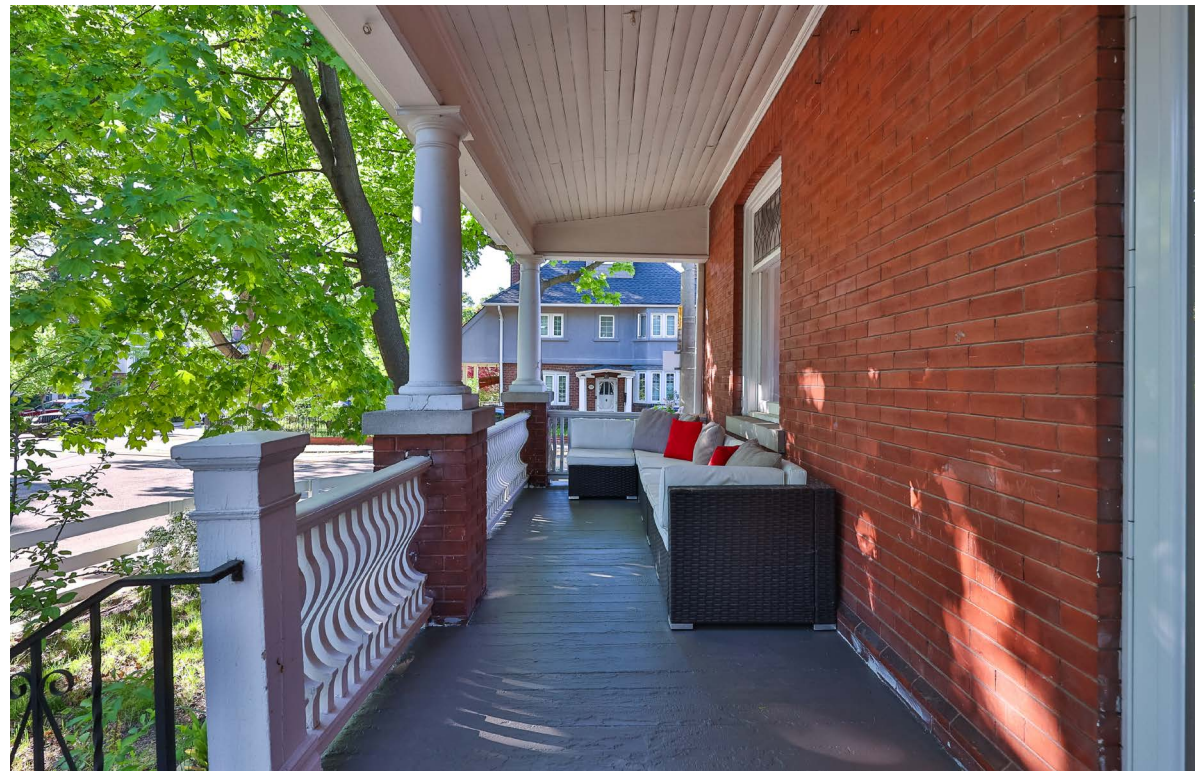
- Two car private driveway

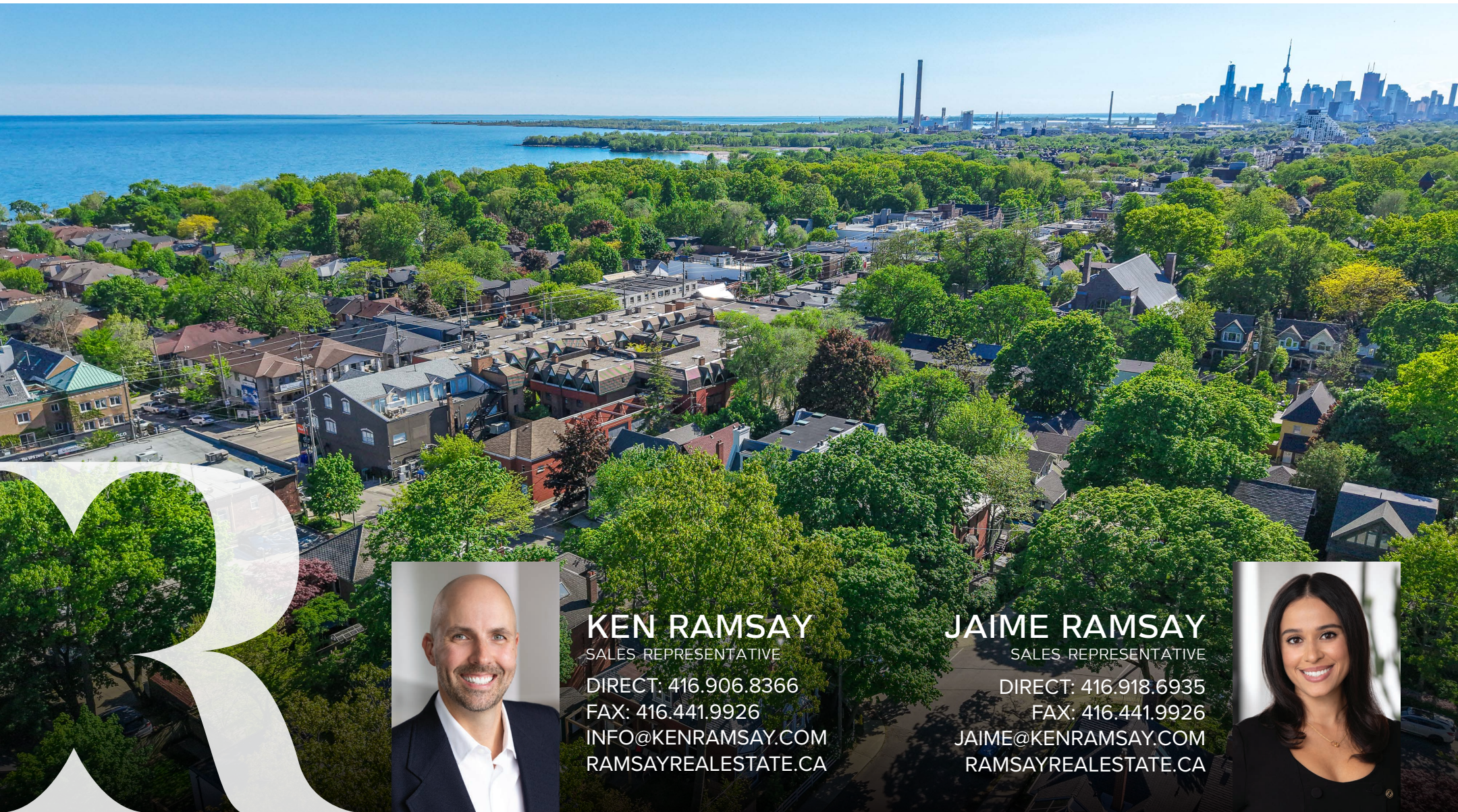
HEATING & AIR CONDITIONING

- High-efficiency combi-boiler 2021
- Mitsubishi high-efficiency heat pump with three heads

POSSESSION

- To be arranged





KEN RAMSAY

SALES REPRESENTATIVE

DIRECT: 416.906.8366

FAX: 416.441.9926

INFO@KENRAMSAY.COM

RAMSAYREALESTATE.CA



JAIME RAMSAY

SALES REPRESENTATIVE

DIRECT: 416.918.6935

FAX: 416.441.9926

JAIME@KENRAMSAY.COM

RAMSAYREALESTATE.CA



2145 AVENUE ROAD, TORONTO, ON M5M4B2 | 416.441.2888

